

mit

pug

cat

dog

fin

tap

man

run

bed

lid

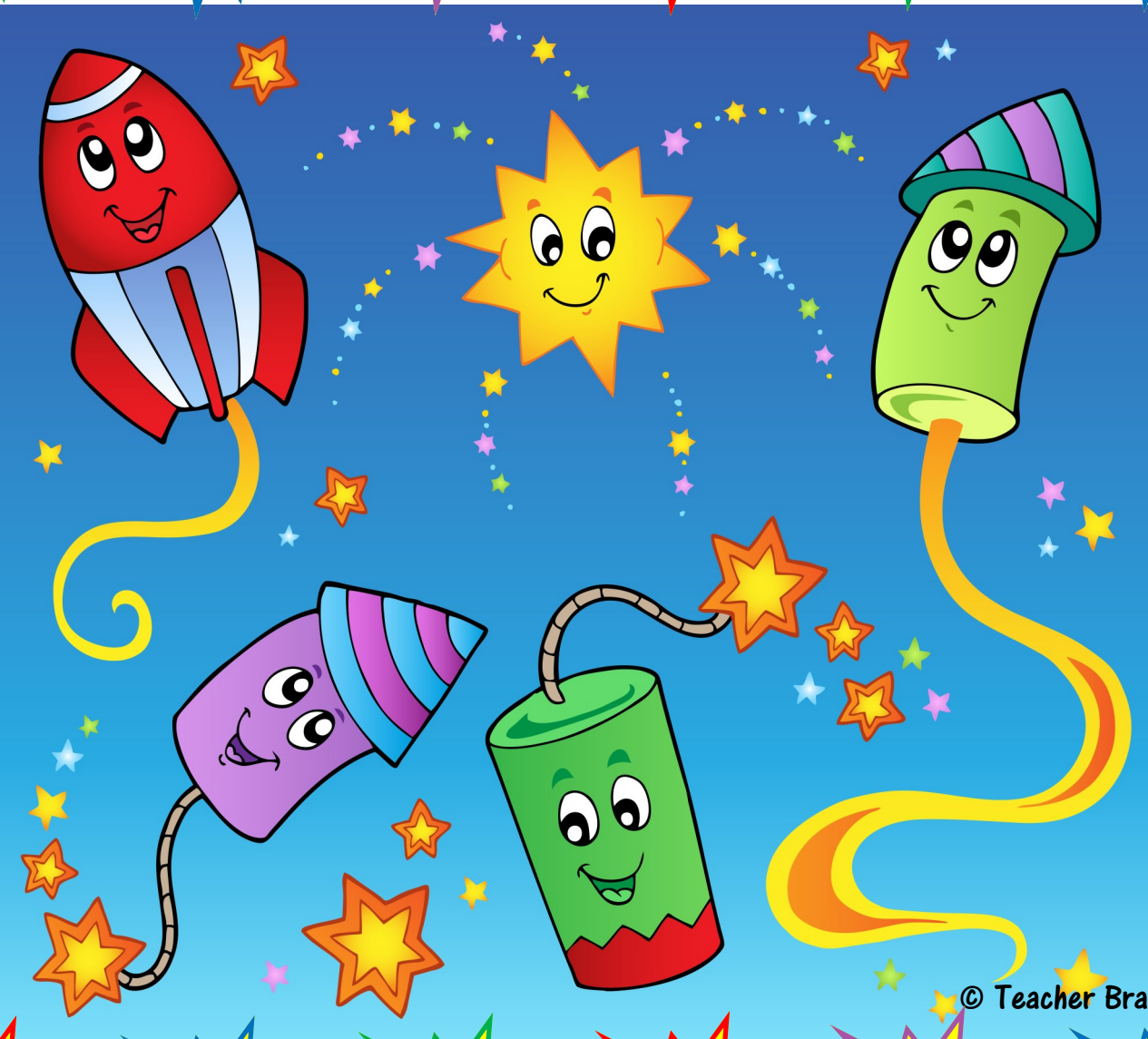
bag

tip

dud

cot

Sky High Rhyme Time



Think up a rhyming word for each space that you land on.
 The rhyme must be different each time you pass that space.

© Teacher Brain 2013 TB

nut

peg

toy

let

ten

go

lay

bee

jig

bad

up

dud